

## Деталировка

# Балансировочный стенд TECO 670 - TECO 670 PLUS

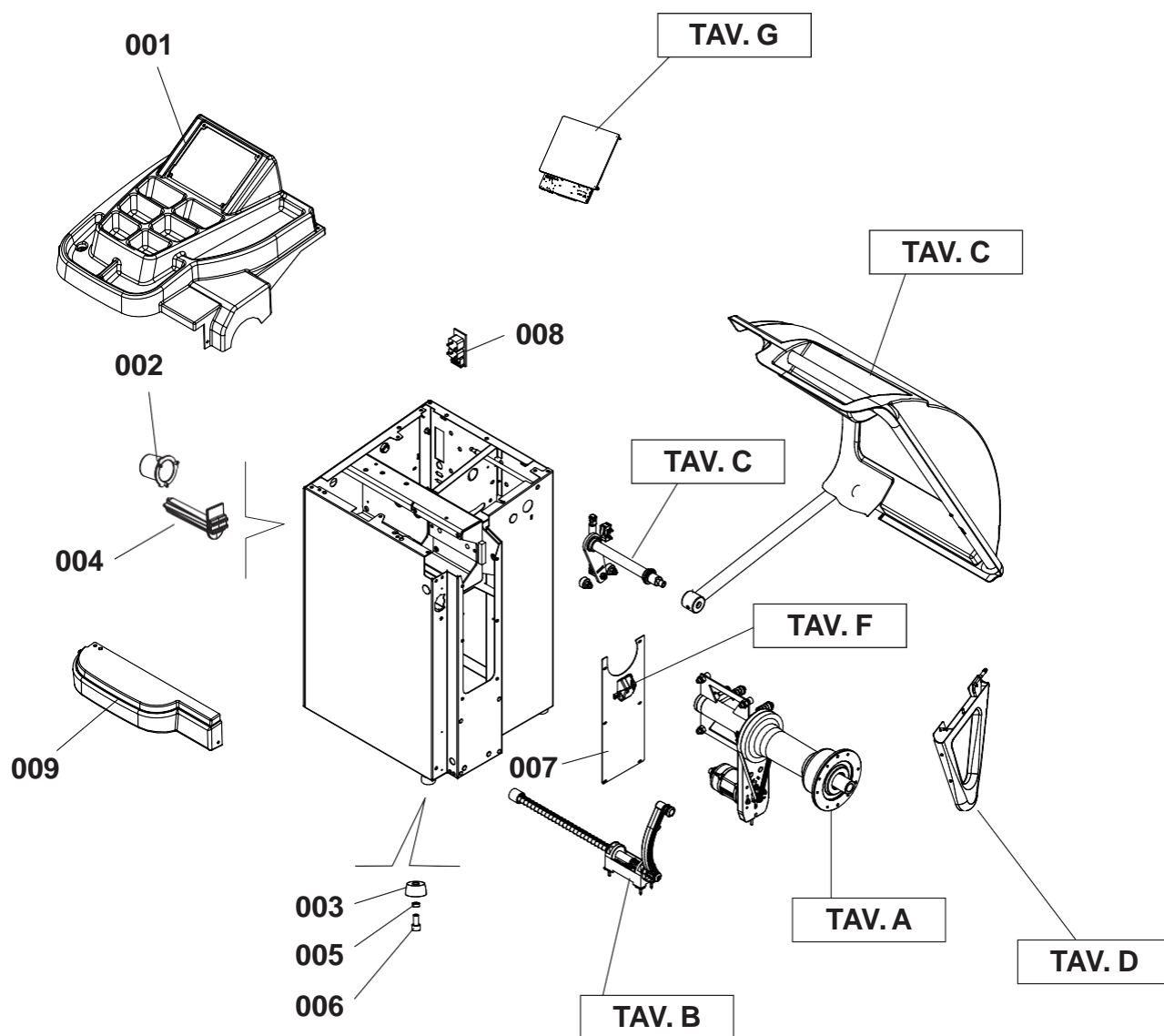
Version 1.3 - June 2018





TAV. 00

COMPLESSIVO TECO 670 / TECO 670 OVERALL

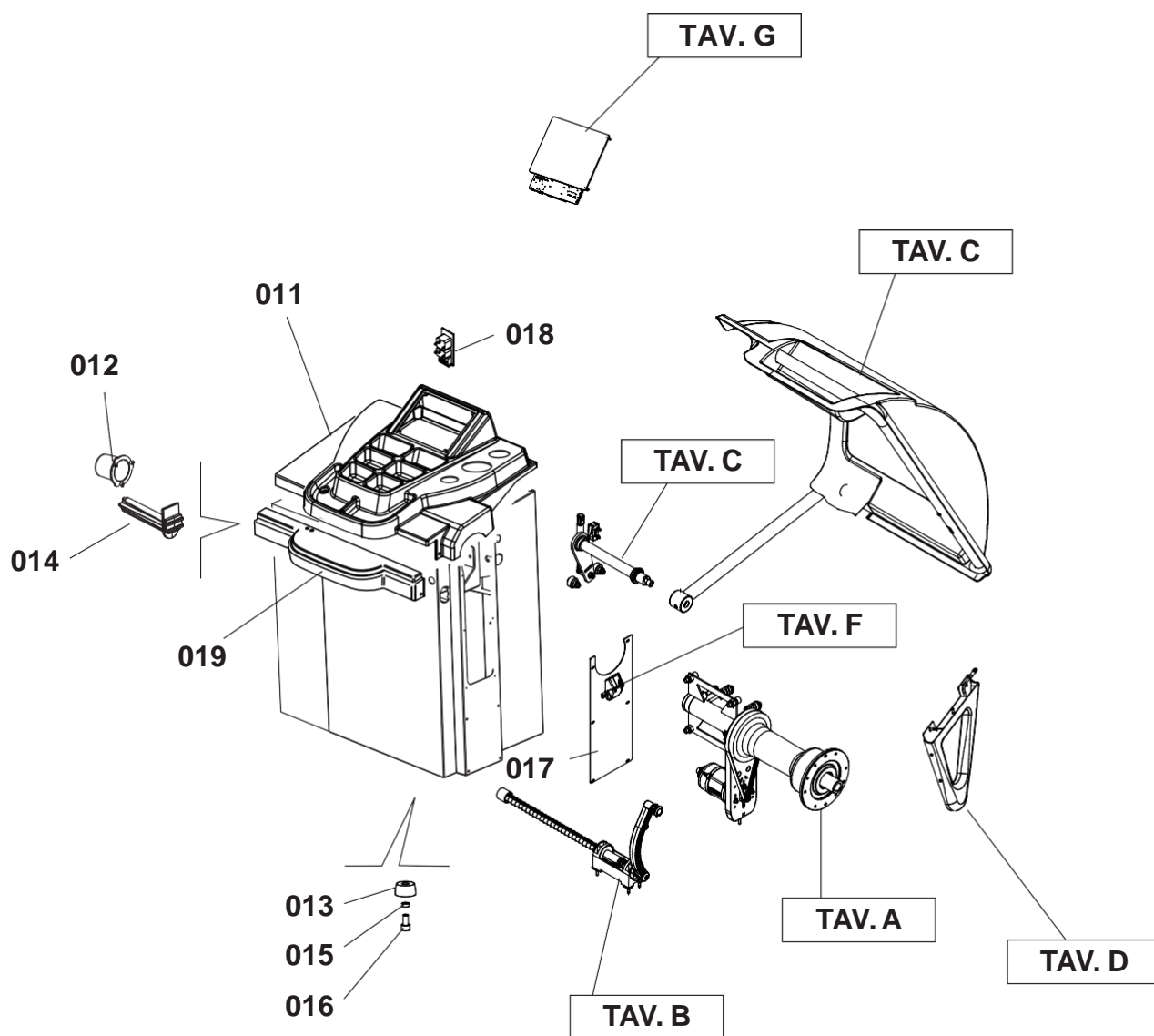






TAV. 01

COMPLESSIVO TECO 670 PLUS / TECO 670 PLUS OVERALL





	TAV. 01	COMPLESSIVO TECO 670 PLUS / TECO 670 PLUS OVERALL
---	---------	---

	TAV. 01	COMPLESSIVO TECO 670 PLUS / TECO 670 PLUS OVERALL
---	---------	---

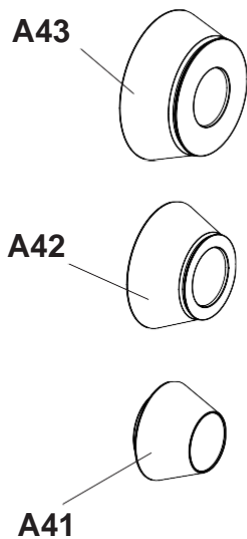
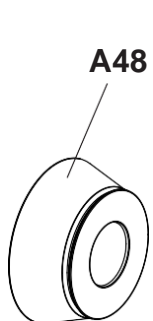
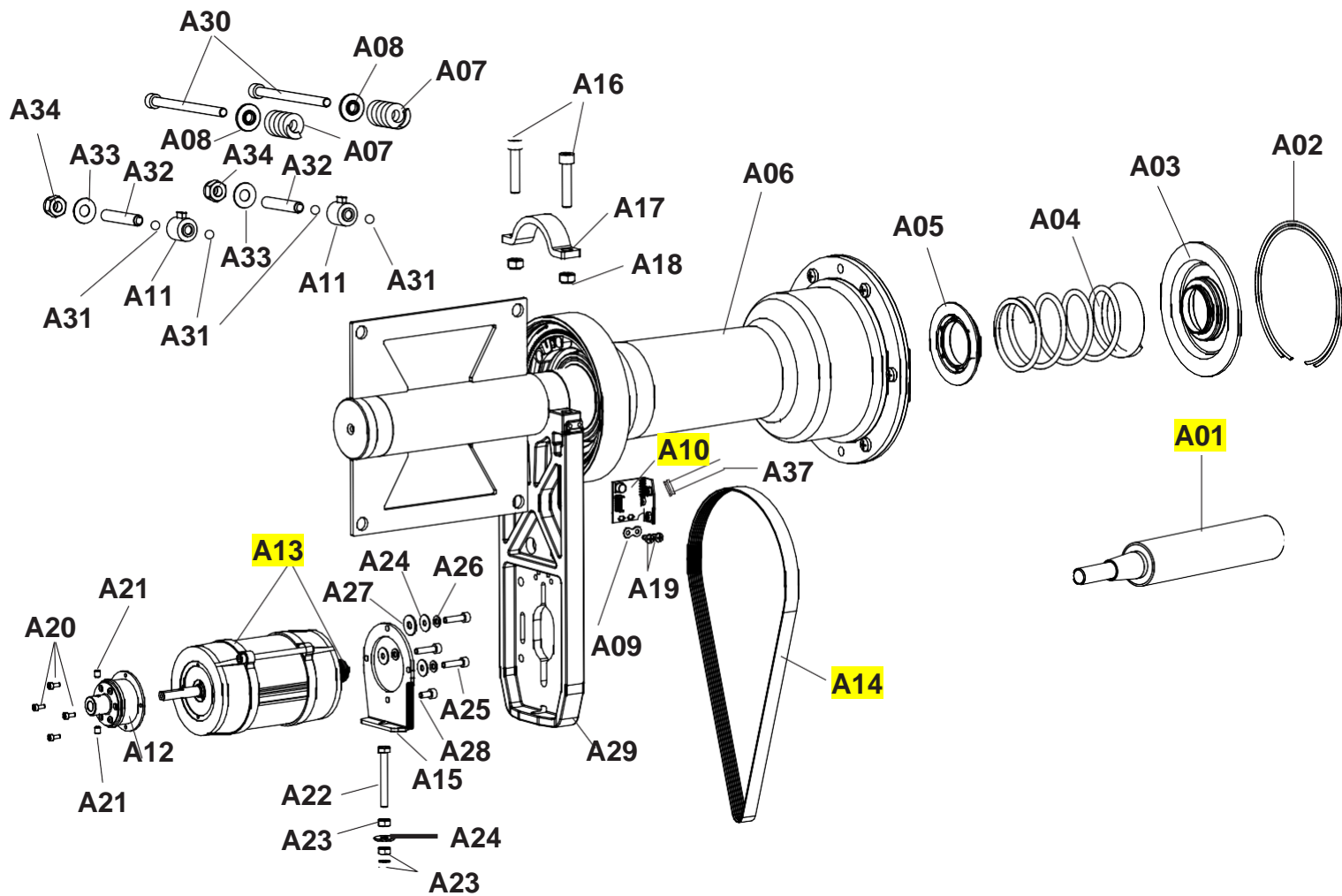
[illegible]

AGGIORNAMENTI / UPDATE:

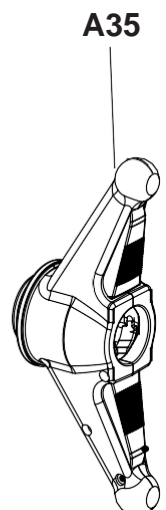
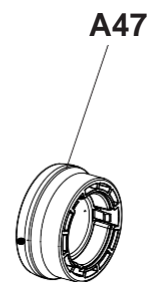
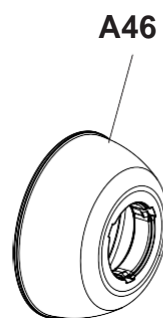


TAV. 01

COMPRESSORE A COPIE 70 DB CUS. 1100 G. 6000 RPM OVERALL



A40



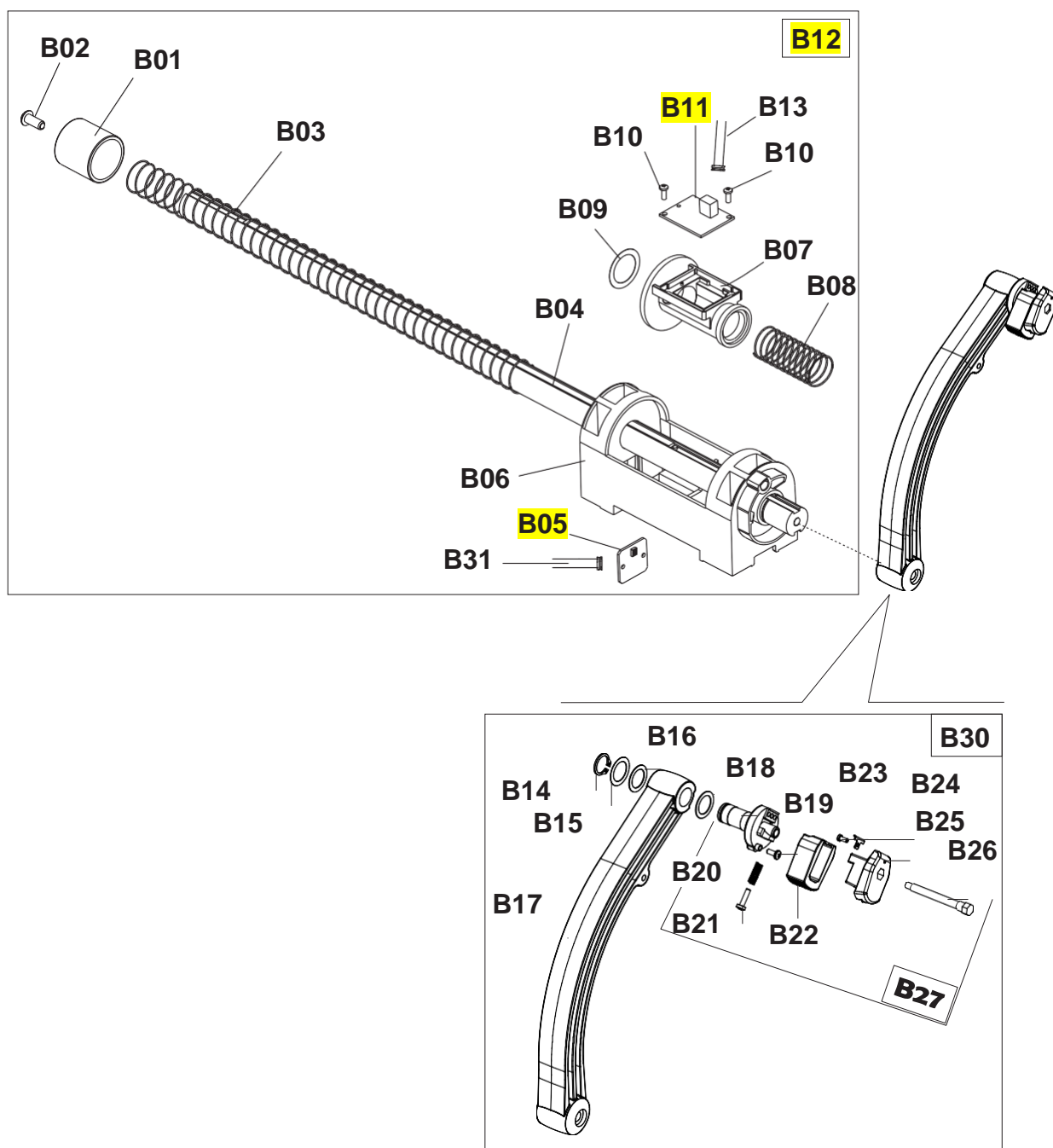
A44

	TAV. 01	COMPLESSIVO TECO 670 PLUS / TECO 670 PLUS OVERALL
--	---------	---

RS	REF	COD.	DESCRIZIONE	DESCRIPTION
	A01	5-101514		БАЛ РЕЗЬБОВОЙ
	A02	4-101740	ANELLO D.127,5X2,5	RING D.127,5X2,5
	A03	4-104590	DISCO PREMI MOLLA D.40	DISC SPING COMPRESSOR D.40
	A04	4-104588	MOLLA D.4,8X66X121	SPRING D.4,8X66X121
	A05	4-104589	DISCO PORTA MOLLA D.40	DISC HOLDER SPRING D.40
	A06	5-120046	GRUPPO OSCILLANTE	OSCILLATING GROUP
	A07	4-104652	MOLLA D.6X25X41	SPRING D.6X25X41
	A08	4-104650	BOCCOLA POSTERIORE MOLLA PICK UP	BUSH REAR SPRING PICK UP
	A09	4-130102	PIASTRA FISSAGGIO ENCODER	ENCODER PLATE
	A10	5-120045	SK ENCODER	КОДИРОВОЧНАЯ ПЛАТА
	A11	5-103533	PICK-UP	PICK-UP
	A12	5-103692	FRENO CON MOZZO	BRAKE ASSEMBLY
	A13	5-100172		ДВИГАТЕЛЬ 230V
	A13	5-100180	MOTORE AC 115V	MOTOR 115V
RS	A14	3-03052		РЕМЕНЬ
	A15	4-104598	FLANGIA MOTORE	MOTOR FLANGE
	A16	2-02008	VTCEI 1/2F M8X40	CIRC. SOCKET HEAD SCREW 1/2F M8X40
	A17	4-104591	FLANGIA SUPPORTO MOTORE	MOTOR SUPPORT FLANGE
	A18	421349	DADO ES. A. M8	AUTOLOCKING HEXAGON NUT M8
	A19	2-03369	VATCCIC M4X8	SCREW M4X8
	A20	2-02805	VTCEI M3X8	CIRCULAR SOCKET HEAD SCREW M3X8
	A21	2-02922	VSTEI P.PA. M5X6	CSK SCREW SOCKET M5X6
	A22	2-03427	VTE M6X50	HEXAGON HEAD SCREW M6X50
	A23	2-00146	DADO ES.N. M6	NORMAL HEXAGON NUT M6
	A24	2-00679	ROSETTA D.6,6X18X1,5	WASHER D.6,6X18X1,5
	A25	2-03003	VTCEI M5X20	CIRC. SOCKET HEAD SCREW M5X20
	A26	2-71546	ROSETTA D.5	WASHER D.5
	A27	2-00713	ROSETTA D.5,5X15X1,6	WASHER D.5,5X15X1,6
	A28	2-00891	VTCEI M5X10	CIRCULAR SOCKET HEAD SCREW M5X10
	A29	4-106938	SUPPORTO MOTORE	MOTOR SUPPORT
	A30	2-03421	VTCEI M8X110	CIRC. SOCKET HEAD SCREW M8X110
	A31	2-00243	SFERA 5/16"	SPHERE 5/16"
	A32	2-03600	VSTEI P.CP. M10X45	CSK SCREW SOCKET M10X45
	A33	424993	MOLLA D.10,2X23X1,25	SPRING D.10,2X23X1,25
	A34	2-01019	DADO ES.N.A. M10	NORMAL AUTOLOCKING HEX. NUT M10
	A35	5-101561	GHIERA DI BLOCCAGGIO RUOTA	WHEEL LOCKING HANDLE
	A37	449319	CAVO FLAT 8 VIE L.1100mm	FLAT CABLE 8-WAY L.1100mm
	A40	5-600851	KIT 3 CONI	COMPLETE CONE KIT
	A41	4-104790B	CONO PICCOLO D. 42-68	SMALL CONE D. 42-68
	A42	4-102571B	CONO MEDIO D. 60-87	MEDIUM CONE D. 60-87
	A43	4-102572B	CONO GRANDE D. 83-103,5	LARGE CONE D. 83-103,5
	A44	5-600852	KIT COMPLETO GHIERA	COMPLETE RING NUT KIT
	A45	4-115868	PROTEZIONE PER CERCHI IN LEGA	GUARD FOR CENTERING ALLOY WHEELS
	A46	4-115863	CALOTTA FISSAGGIO RUOTA D. 129,5	WHEEL FIXING CAP D. 129,5
	A47	4-115864	CAPPELOTTO DISTANZIALE PER GHIERA	SPACER CAP FOR RING NUT
	A48	4-103186B	CONO D. 119	CONE D. 119

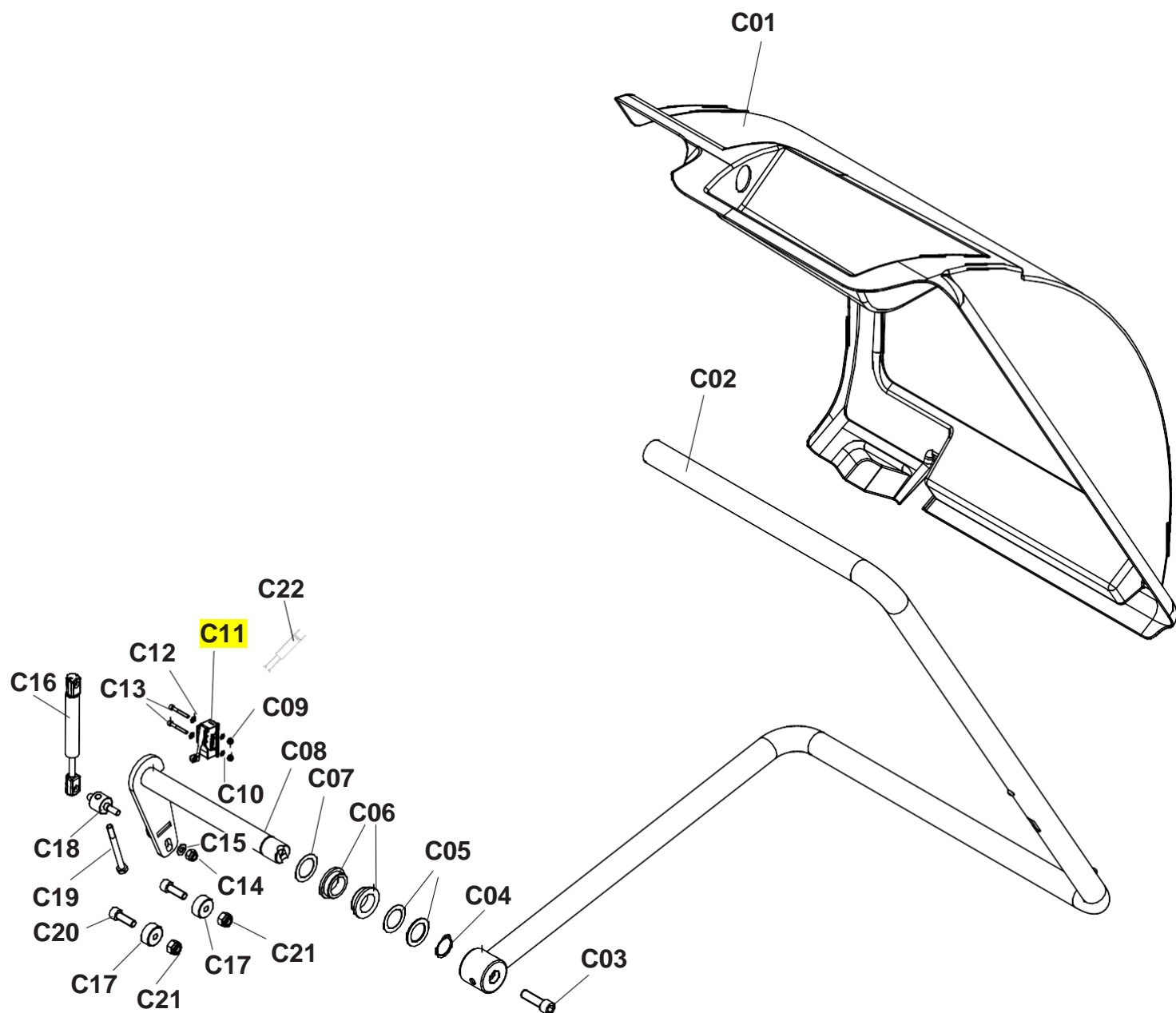
**RS= RICAMBI CONSIGLIATI / RECOMMENDED SPARES**

**AGGIORNAMENTI / UPDATE:**

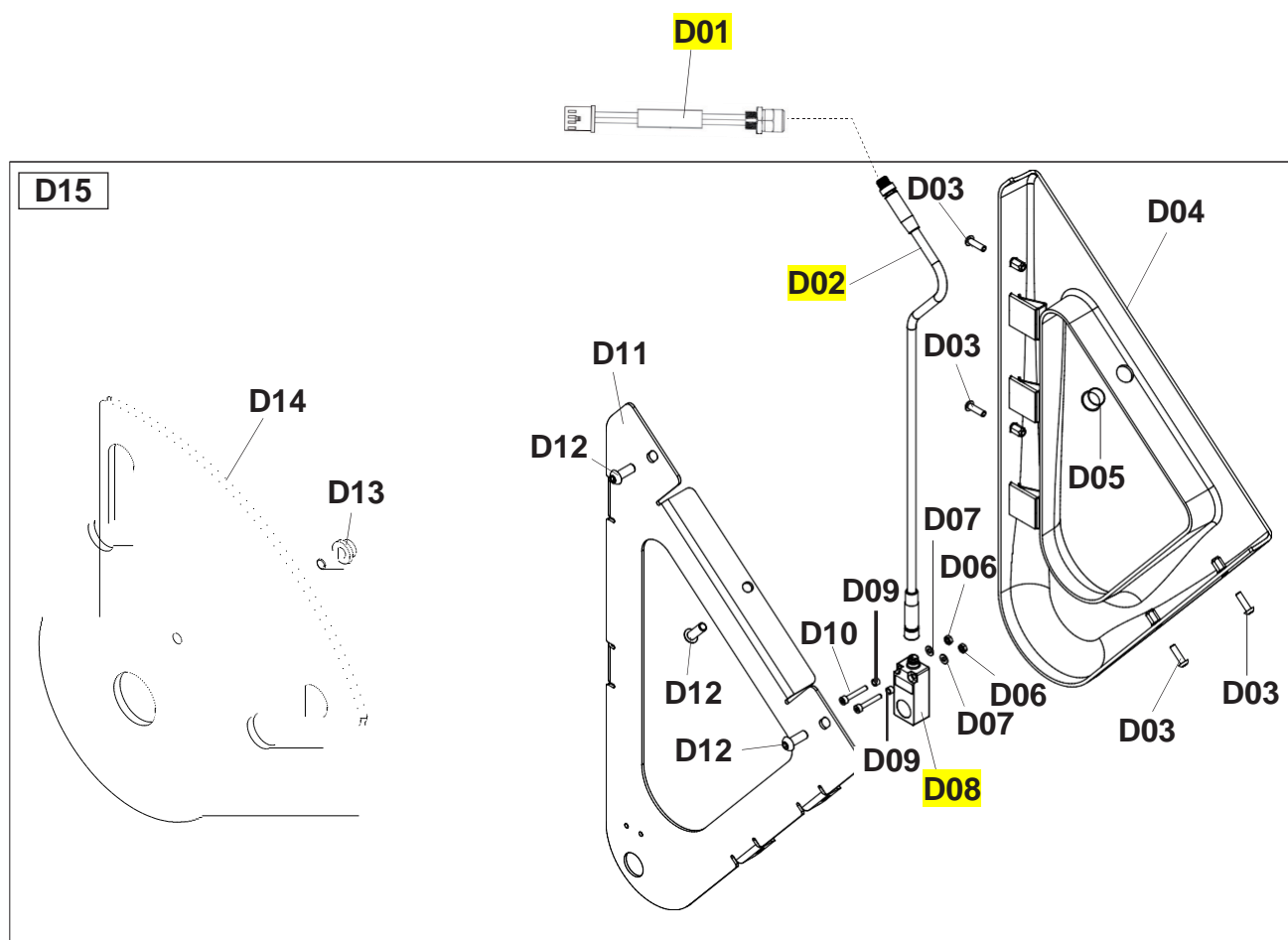




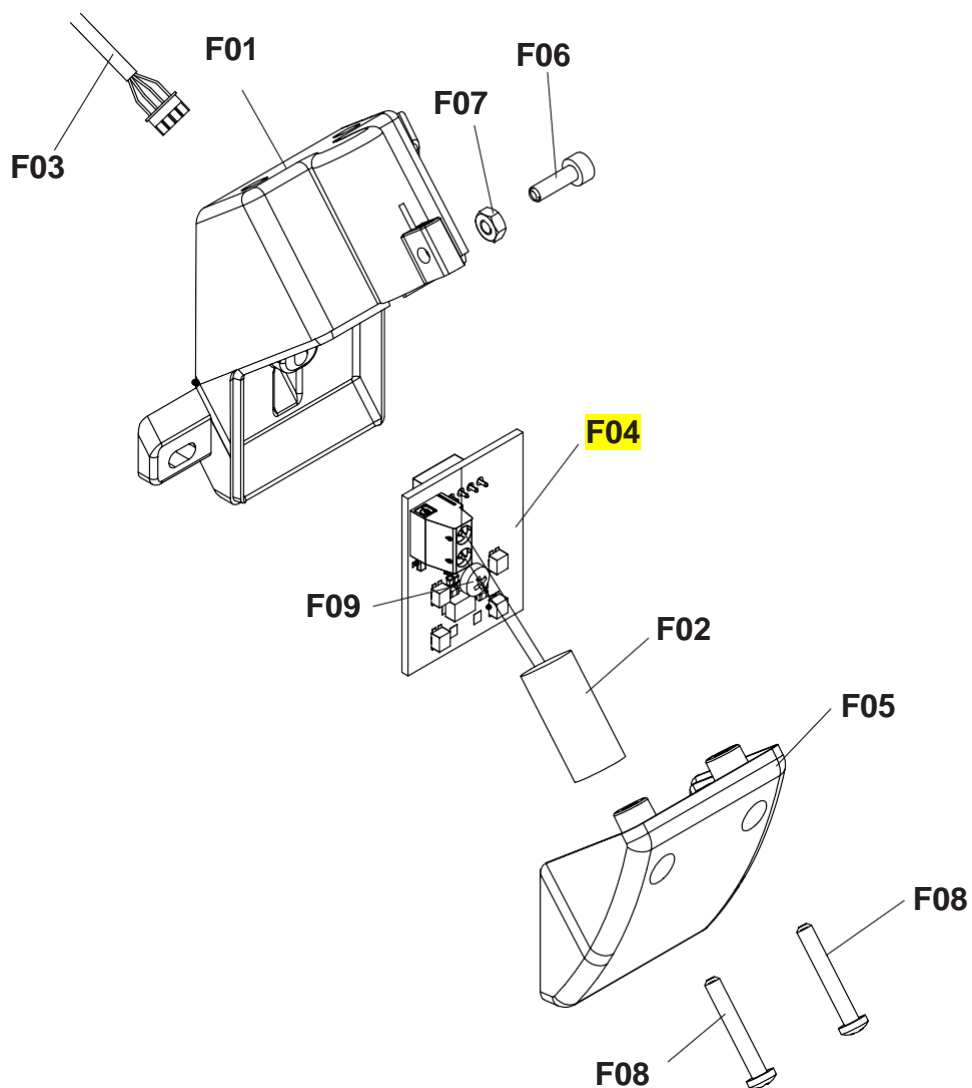




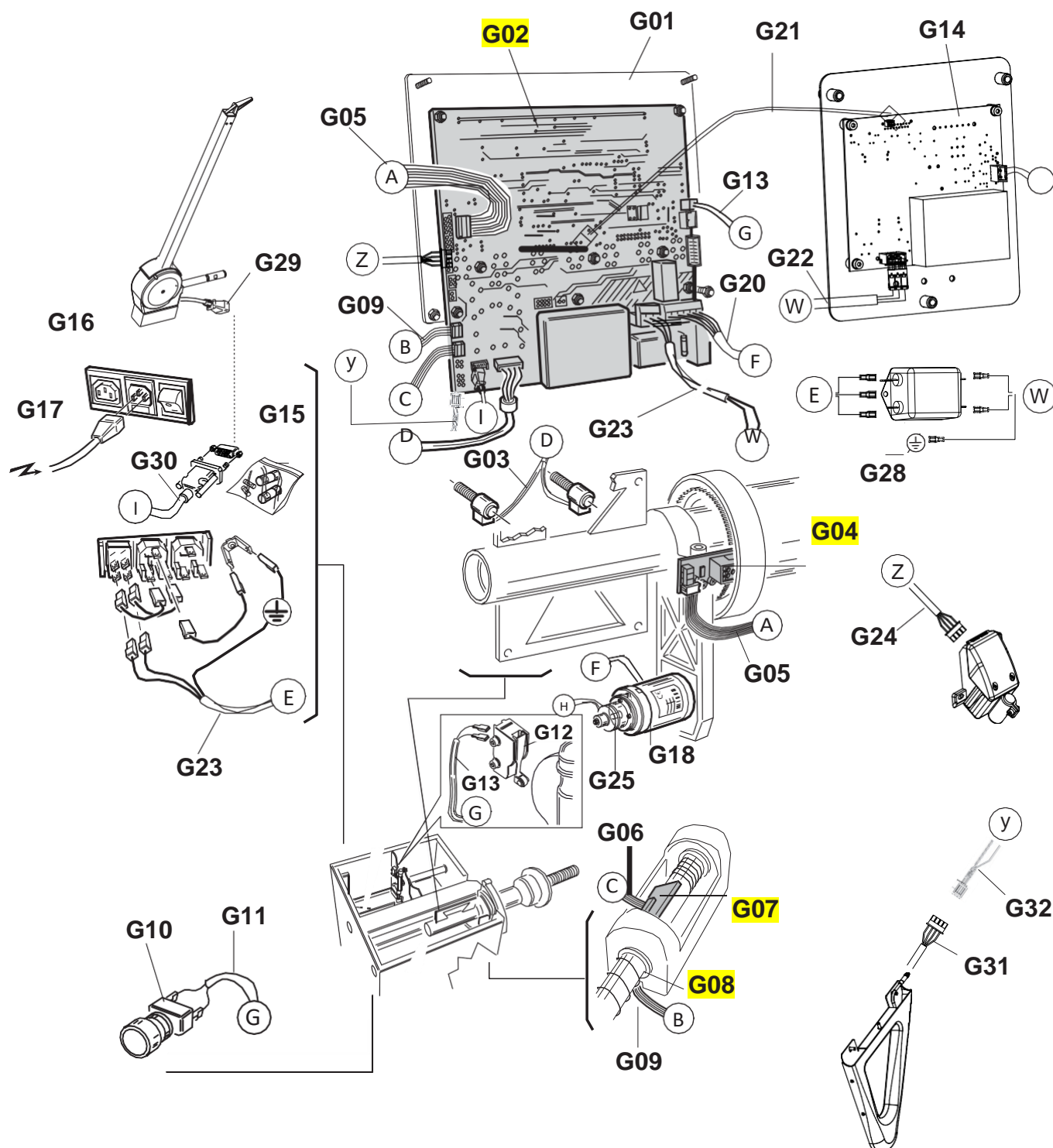
### AGGIORNAMENTI / UPDATE:



AGGIORNAMENTI / UPDATE:



AGGIORNAMENTI / UPDATE:



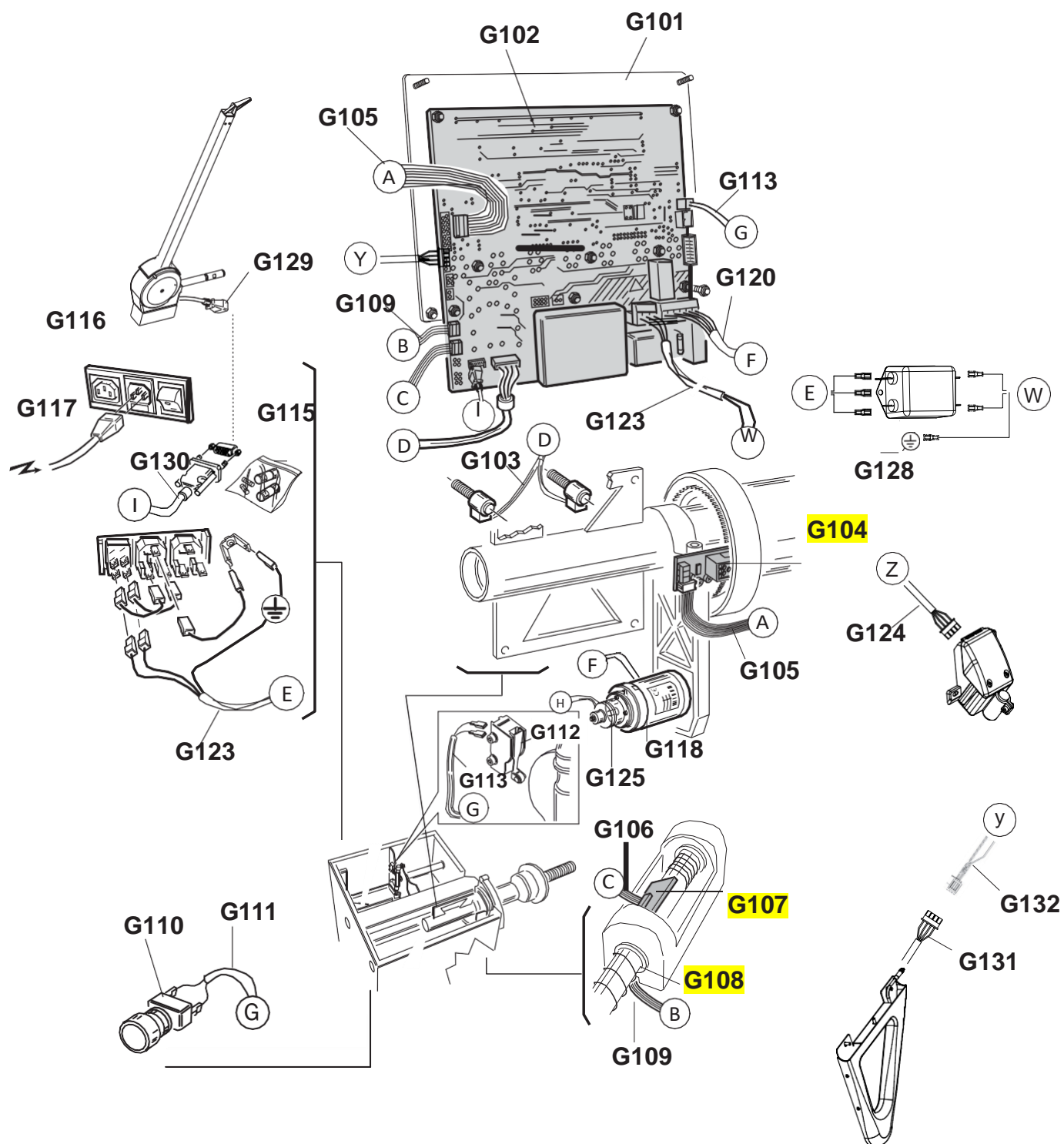






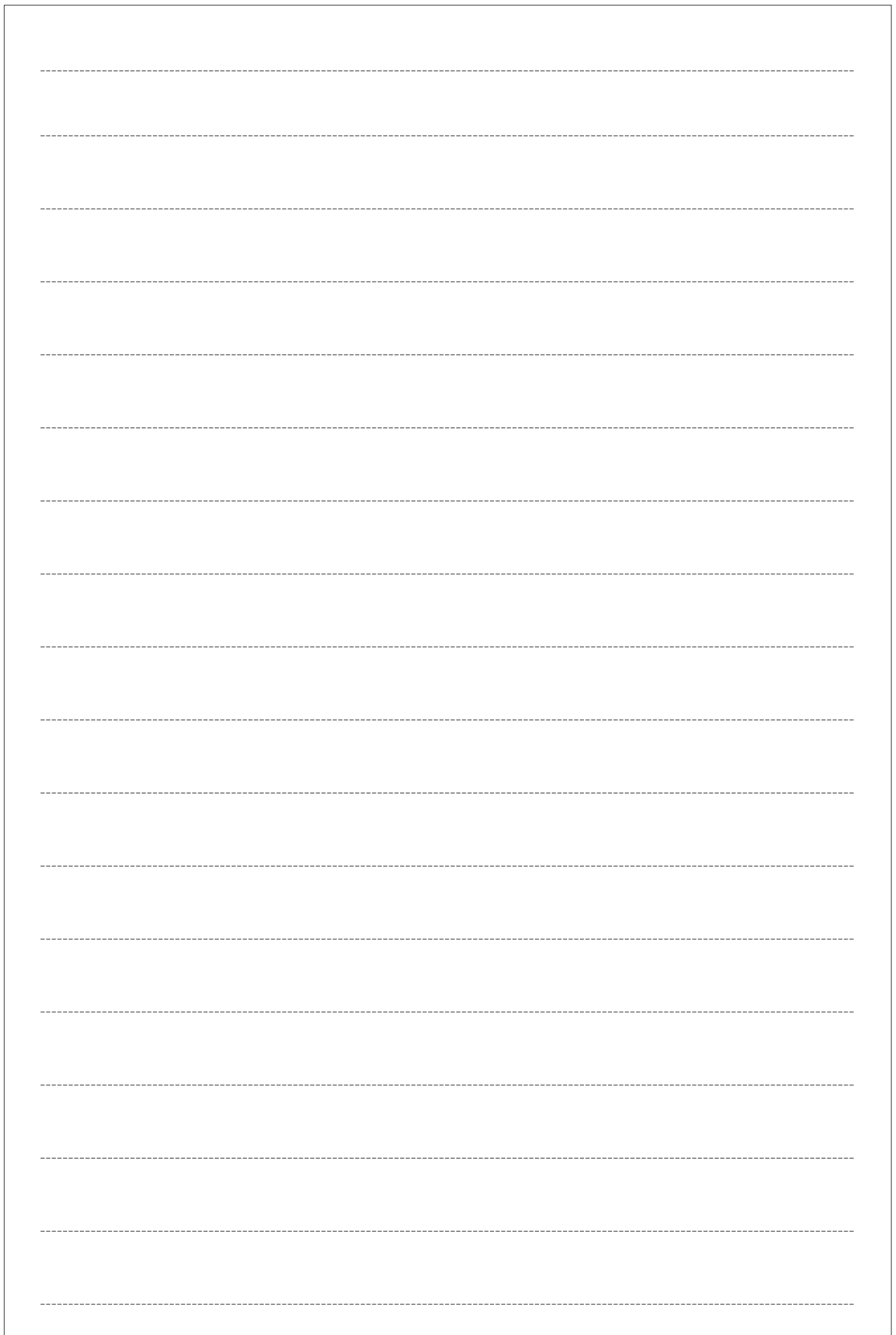
TAV. 61

CABLAGGI ELETTRICI (da matricola 171069953)  
GRUPPO ILLUMINATORE / ILLUMINATOR GROUP  
ELECTRICAL WIRING (from s.n. 171069953)















**Automotive Equipment**

Teco Srl

Società Unipersonale soggetta a direzione e coordinamento di Minio srl

Via Pio La Torre, n°10

42015 Correggio (RE) Italy

[www.teco.it](http://www.teco.it) - [www.tecoautomotive.com](http://www.tecoautomotive.com)

[www.youtube.com/user/TECOsrl](http://www.youtube.com/user/TECOsrl)

Telephone: +39.0522.631562

Fax: +39.0522.642373

E-mail: [teco@teco.it](mailto:teco@teco.it)