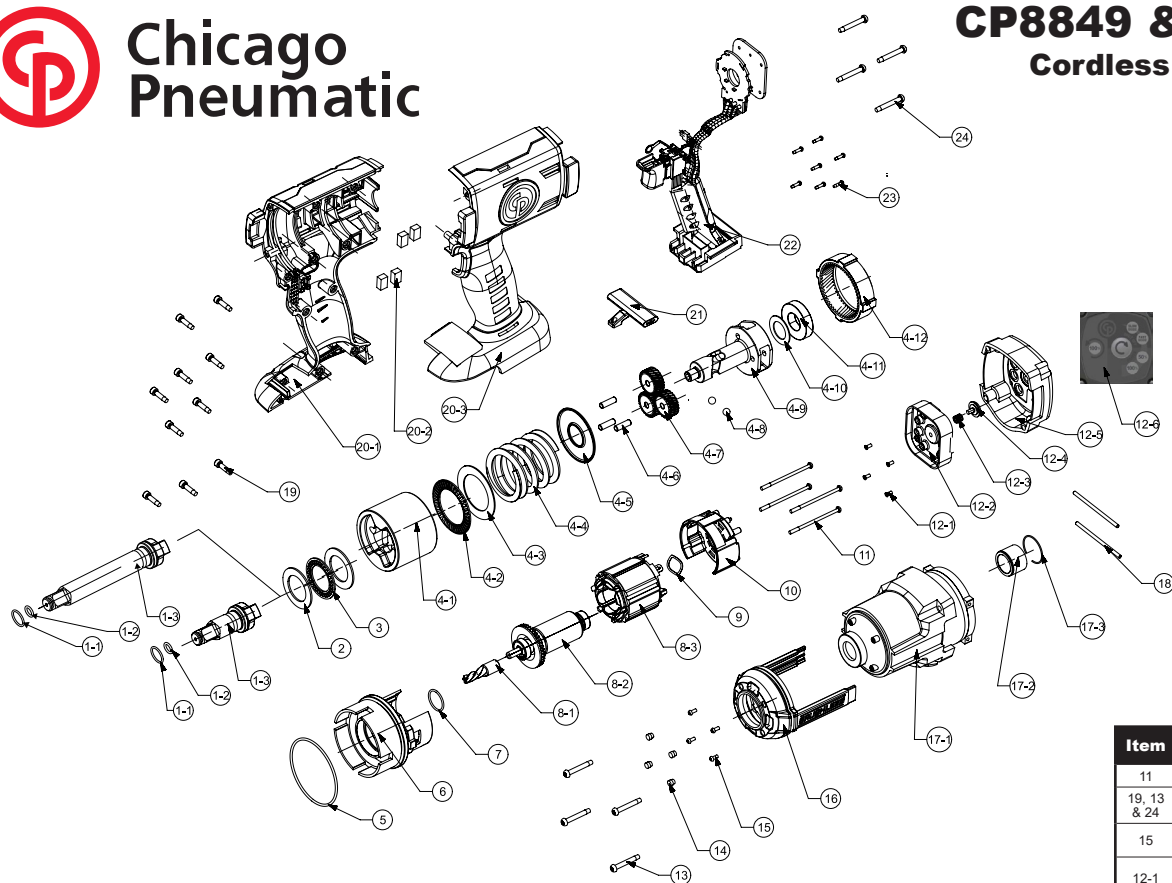




**Chicago  
Pneumatic**

# CP8849 & CP8849-2

## Cordless impact wrench Serie C



Item	Glue	tightening torque
11	/	0.5 ft.lbs 0.69 Nm
19, 13 & 24	/	1 ft.lbs 1.37 Nm
15	RITE-LOKE TL77 - 0.2g	0.36 ft.lbs 0.5 Nm
12-1	RITE-LOKE TL77 - 0.2g	0.22 ft.lbs 0.3 Nm



8940175682	Nameplate
8950900061	Warning Label
8940175118	Safety Information

Ref	CP Part No.	Description	Q'ty
<b>A</b>	<b>8940175686</b>	<b>Gear Case assembly</b>	
14		Rubber	4
15		M Screw M2.5	4
16		LED Assembly	1
17-1		Die-casting Gear Case	1
17-2		Bush SCM440	1
17-3		Retaining Ring	1
<b>B1</b>	<b>8940175689</b>	<b>Short Anvil Assembly for CP8849</b>	
1-1		Retaining Ring	1
1-2		O-ring	1
1-3		1/2" Short Anvil	1
<b>B2</b>	<b>8940175884</b>	<b>Long Anvil Assembly for CP8849-2</b>	
1-1		Retaining Ring	1
1-2		O-ring	1
1-3		1/2" Long Anvil	1
<b>C</b>	<b>8950251279</b>	<b>Anvil Collar Kit</b>	
1-2		O-Ring	5
1-1		Retaining Ring	5
<b>D</b>	<b>8940175690</b>	<b>Gear Box Assembly</b>	
4-1		Impactor	1
4-2		Thrust Bearing	1
4-3		Washer	1
4-4		Compression	1
4-5		Washer	1
4-6	8940175747	Planet Gear Pin	3
4-7	8940175748	Planet Gear	3
4-8		Ball	2
4-9		Driving Shaft	1
4-10		Washer	1
4-11		Ball Bearing	1
4-12	8940175749	Ring Gear	1
<b>E</b>	<b>8940175691</b>	<b>Main PCBA</b>	
8		Motor Assembly	1
8-1		Motor Pinion	1
8-2		Motor Armature	1
8-3		Motor Field	1
22	8940175750	Main PCBA ass'y	1

Ref	CP Part No.	Description	Q'ty
<b>F</b>	<b>8940175700</b>	<b>End Cap Assembly</b>	
12-1		M3 Screw for Speed Plate	4
12-2		Plastic Rear PCB Box	1
12-3		Spring for Speed Button	1
12-4		Plastic Speed Button	1
12-5		Die-casting End Cap	1
12-6	8940175751	Instruction label (speed select)	1
<b>G</b>	<b>8940175702</b>	<b>Housing Assembly</b>	
19	8940175703	Housing Screw	10
20-1		Plastic Housing Cover	1
20-2		Silicance Rubber Cushion	4
20-3		Plastic housing support	1
	8950900061	Warning label	1
<b>H</b>	<b>8940175685</b>	<b>Front LED Assembly</b>	
14		Rubber	4
15		M screw M2.5	4
16		Front LED Assembly	1
<b>I</b>	<b>8940175855</b>	<b>Washer Kit</b>	
2		Stamping, Flat washer	2
3		Needle bearing INA AXK2539	1

5	8940175688	Oil seal o-ring	1
6	8940175693	Motor Mounting	2
7	8940175694	O-Ring	1
9	8940175696	Wave Washer	1
10	8940175697	Motor Rear Cover	1
11	8940175698	M3 Screw (Set of 4)	1
13	8940175704	ST Screw M4.5 (Set of 4)	1
14	8940175683	Rubber	4
15	8940175684	M screw M2.5	4
18	8940175687	Motor Mounting Pin	2
19	8940175703	Housing Screw	10
21	8940175692	F/R Button	1
23	8940175699	M2.3 Screw	7
24	8940175701	M4 Screw (Set of 4)	1

### Recommended Maintenance Tools

It is recommended to treat the battery tool contacts every 6 months with contact lubricant  
Electrolube : ERCS53A35SL

### Recommended Accessories

Battery  
8940172261 20V 4.0Ah  
8940173636 20V 6.0Ah



8940172262 CHARGER 20V EUROPE  
8940172286 CHARGER 20V USA  
8940172287 CHARGER 20V UK  
8940172288 CHARGER 20V AUS  
8940174305 CHARGER 20V KOREA  
8940173638 DUAL CHARGER 12-20V

